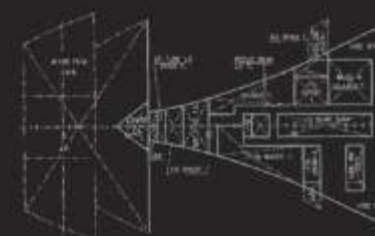
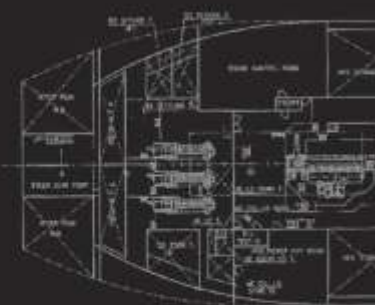


Name of the vessel: m/t APATYTH

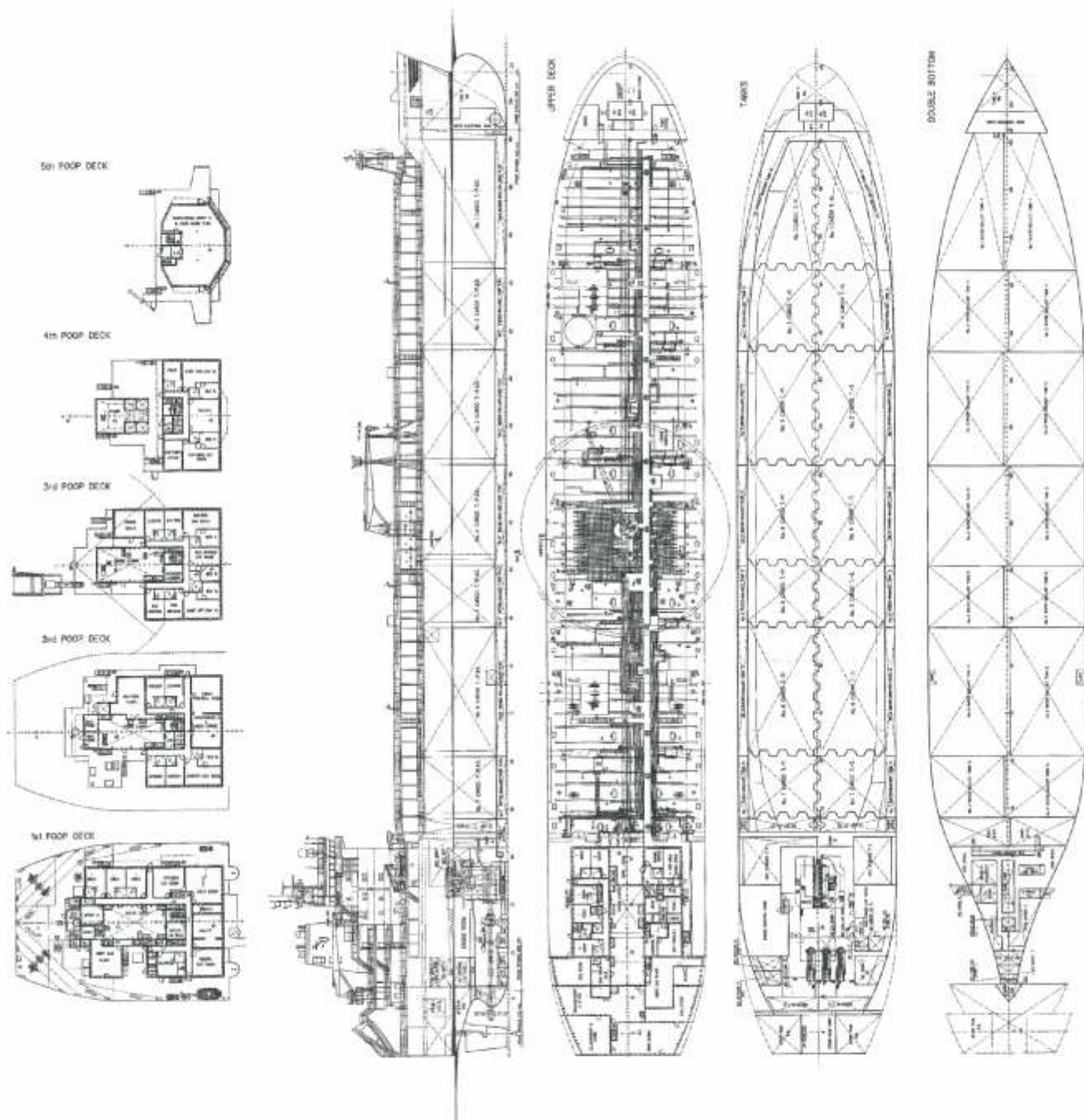


APATYTH

| Type | Chemical Tanker Type-2, Oil Tanker |
|------------------------|---|
| IMO-No. | 9247388 |
| Call Sign | 5BJC4 |
| Flag | Cyprus |
| Classification Society | DNV-GL |
| Class | +100 +A5 E2 ESP IW ERS Chemical Tanker Type 2, Oil Tanker, MC E2, AUT INERT RP1-16% |
| Year of Built | 2004 |
| DWT | 24086 T |
| GRT | 16901 T |
| NRT | 6847 T |
| Capacity at 98% | 29554 m ³ |
| Cargo tanks | 17 mild steel |
| Ballast tanks | 11893 m ³ |
| SBT | 11895 T |
| Length | 167,57 m |
| Breadth | 26,40 m |
| Max draught | 9,17 m |
| Total Power | 7850 kW |
| Bow thruster | 800 kW |



MT APATYTH



MAIN PARTICULARS:

| | |
|-------------------|-----------|
| LENGHT OVER ALL | 167,57 M |
| LENGHT BETW. P.P. | 161,54 M |
| BREADTH MOULDED | 26,40 M |
| DEPTH | 13,80 M |
| DRAUGHT (SUMMER) | 9,17 M |
| DEADWEIGHT | 24086 MTS |

