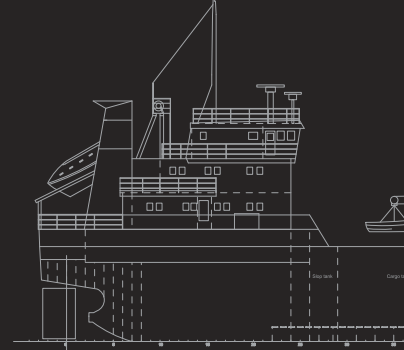
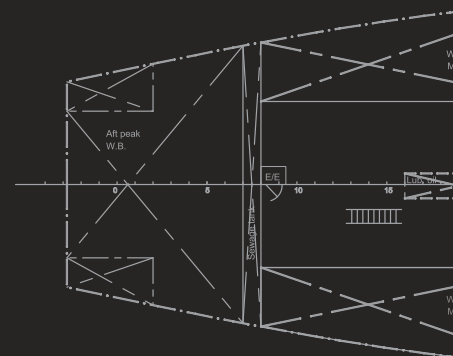
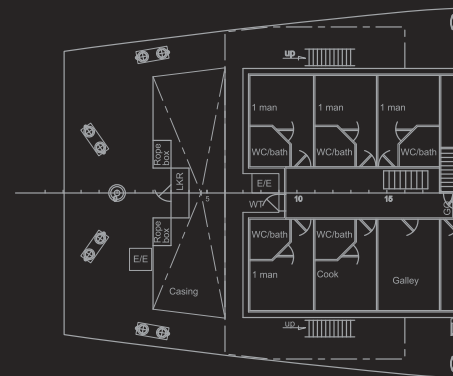


Name of the vessel: m/t AGATH



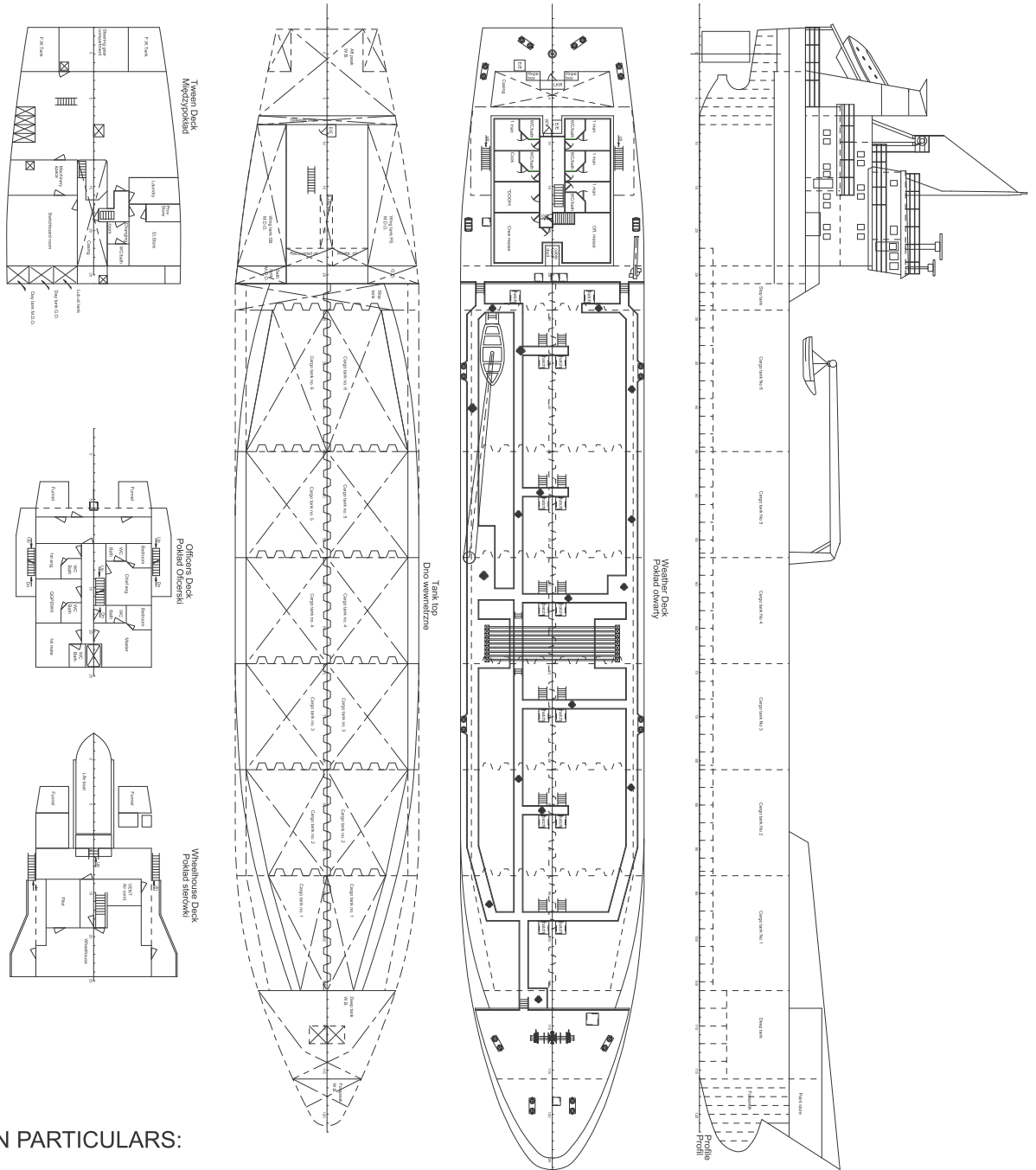
AGATH

Type	Oil Chemical Tanker / IMO II
IMO-No.	8820298
Call Sign	5BDX3
Flag	Cyprus
Classification Society	RINA
Class	+100 A1 ESP Ice Class 1D + LMC/AUT
Year of Built	1991
DWT	3232 mts
GRT	1716 T
NRT	850 T
Capacity at 98%	3071 cbm
Cargo holds/hatches	12 stainless steel
SBT	358 T
Length	83,50 m
Breadth	13,50 m
Max draught	5,47 m
Total Power	1100 kW
Bow thruster	183 kW



 **Unibaltic**

MT AGATH



MAIN PARTICULARS:

LENGHT OVER ALL	83,50 M
LENGHT BETW. P.P.	78,57 M
BREADTH MOULDED	13,50 M
DEPTH	6,60 M
DRAUGHT (SUMMER)	5,47 M
DEADWEIGHT	3232 MTS